



2022 Color Trends.
Shifting Perspectives.



the 2022 collection

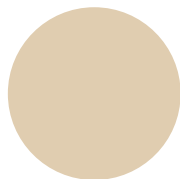
Beautiful choices for the way we live today.

Life at home is in an exciting state of realignment. We're taking second and third looks at how we use our space and how it makes us feel. Our 2022 Color Trends shades are freshly curated to work with shifting perspectives and help bring beautiful colors to the changes you'd like to see in your home.

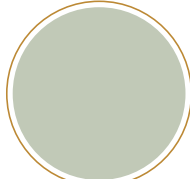
2022 Color of the Year



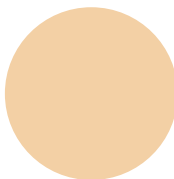
Milk Glass WH31



Mushroom Cap 433B



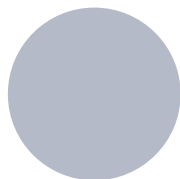
Gray Mist 419B



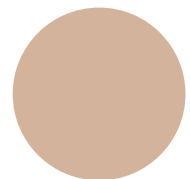
Pumpkin Seed 331B



Georgian 430A



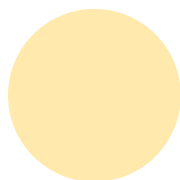
Lilac Hush 306C



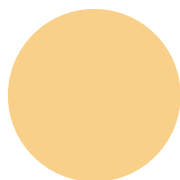
Dune Beige 337C



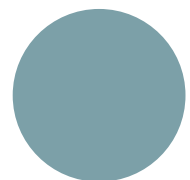
Greenscapes 321B



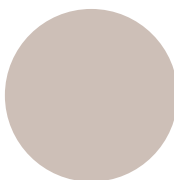
White Corn 328B



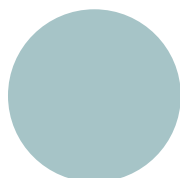
Goldenrod 328C



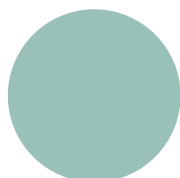
Ebb Tide 311D



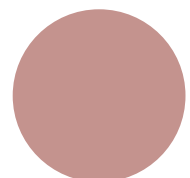
Millstream 404B



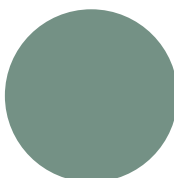
Raindance 311C



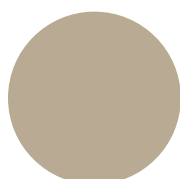
Lake Forest 315D



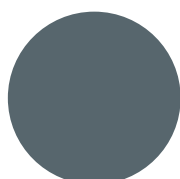
Rose Quartz 339D



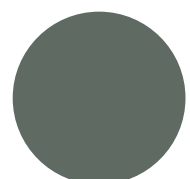
Bay Leaf 317E



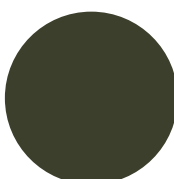
Thrush 402D



Iron Ore 414F



Blue Arroyo 418F



Dark Olive 421G

Please refer to actual chip for accurate color representation.

2022 Color of the Year

Gray Mist 419B

Gray Mist, our 2022 Color of the Year, is a soft sage with a gray undertone. It's the perfect shade as we look for calm in an ever-evolving world and a beautiful choice for any room or décor style.



Towel color inspired by Rose Quartz 339D

Cottagecore looks to the past.

Nostalgia has struck a cord with many desiring a simpler, more honest way of living. This romantic look is about domestic tranquility and creating a charming space untouched by the hustle culture.



Millstream
404B



Iron Ore
414F



Milk Glass
WH31



Jumping off the open floor plan bandwagon.

The biggest residential trend in decades is fading from view in favor of broken plan or flexible living. As rooms take on more diverse roles, we're creating divisions and walls to add privacy for personal or business needs.



Lilac Hush
306C



Thrush
402D



Georgian
430A



Ebb Tide
311D



Milk Glass
WH31



Everything old is new again.

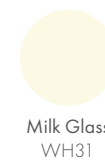
Secondhand or heirloom pieces are refreshed in contemporary colorways for an elevated look. Changing the feel of large and small décor pieces with a modernizing color rethink is a trend that's here to stay.



Rose Quartz
339D



Gray Mist
419B



Milk Glass
WH31



Flower pot colors inspired by Raindance 311C and Gray Mist 419B

Shifting into specialized rooms.

More time at home means spaces need to work in more specialized ways. Take a second look and what was once a guestroom can become a schoolroom. A closet can morph into an office. Even a small nook can have a fresh purpose.



Blue Arroyo
418F



Mushroom Cap
433B



Throw pillow colors inspired by Dune Beige 337C and Mushroom Cap 433B

Japandi's future looks bright.

Step into the hybrid world of Japandi. This new minimalism aesthetic combines Scandinavian design with the traditional elegance of a Japanese sensibility to create a best of both worlds' style.



Lake Forest
315D



Garden planter colors inspired by Dark Olive 421G
Throw pillows and serveware colors inspired by Lake Forest 315D

Moving into slow living.

Rural escapism provides a form of self-care for city dwellers. Seeking comfort by escaping into a quiet home oasis, they value lazy days meandering without a plan and no to-do lists in sight.

Gray Mist
419B

Georgian
430A

Milk Glass
WH31



COLOR JOURNEYS®

Our 2022 Color Trends Collection began with a
comprehensive look at the world.

The creation of the 2022 Color Trends palette began by researching global lifestyle trends from culture, media, fashion, design, food and technology. Our fresh perspective was the jumping-off point that led to the selection of the forward-thinking colors featured in this brochure.

This year's palette takes a simplified approach to color forecasting. It provides trending color combinations but also focuses on them singularly, too, especially this year's Color of the Year, Gray Mist. This soft sage with a gray undertone is the perfect shade for any room or décor style.

As you're rethinking the way you use space in your home, be inspired to rethink the way you use colors, too, with our 2022 Color Trends palette.

We live in a world rich with color and limitless possibility. We get to renew our fascination with color whenever and however we want. We collect it in journals and in drawers.

We curate it from our travels and capsules in time. Our love for it is one thing we're never afraid to share with the world.

Color Journeys® is a celebration of this passion and a destination for enthusiasts everywhere.

For all who seek it, catalog it, and experiment with it, Color Journeys is your inspiration lab and virtual studio, filled with tools to help your next spark become something spectacular.

Get Social

Share what you're doing, planning and thinking. Inspire others with your project photos, ideas and questions using the hashtag #Colorjourneys. We love hearing from you!

